



## RAW RANGE RETAIL PRICE LIST 2024 (excluding VAT)

PRICES ARE SUBJECT TO CHANGE WITHOUT NOTICE BUT CAN BE SECURED WITH A 50% DEPOSIT

### PLEASE READ THE FOLLOWING INFORMATION CAREFULLY BEFORE ORDERING YOUR MILESTONE KITCHEN

Milestone Kitchen units are manufactured from solid timber. You are buying a natural timber product so guarantees are difficult to define because the behaviour of the wood cannot be predicted with confidence. Wood may shrink, warp, split or crack over a period of time, or not at all. Chipboard, which is more commonly used in the manufacture of kitchens, is made in a factory and is predictable but we prefer the warm character of wood, a natural material which grows in a forest. It comes with knots, resin, grain and variable moisture content. No 2 pieces are the same. Cracks, imperfections and colour variations will form part of your Milestone Kitchen's unique character and should not be seen as defects. We do not use ANY chipboard in any part of our kitchens.

The Raw Range is designed to be as affordable as possible and therefore cannot be painted or customised in any way. If you would like customised or painted units then please refer to our price list for the African Allure, French Flair and Swedish Style ranges. These units can be customised according to your needs and are priced accordingly. These ranges all go beautifully with the raw range.

A Milestone Kitchen is sufficiently straight and square to fit into normal building tolerances. It is strong, well designed and constructed, solid and highly sought after. The Raw Range is made by South Africans from South African products only. It comes with adjustable feet to account for skew walls or floors.

If you order a Milestone Kitchen and it falls outside these quality guidelines we will give you a full refund if you return your order to us.

### IMPORTANT INFORMATION

The timber in our units has stabilised to the humidity of the KwaZulu-Natal Midlands. Those of you who live in areas of lower humidity like the Karoo, Namibia or Botswana and other inland areas might find that the Pine tops warp or crack as the timber adjusts to the less humid conditions of your location. The Raw Range is designed in a rustic style so that warps and cracks do not take away from the look and may even add to it however, you will need to accept that you might have to replace them if the cracking is unsightly. Similarly, for those of you who live in areas of high humidity such as the north coast of KwaZulu-Natal or Mozambique, you might find that your units develop yellow stains from the resin in the timber. This is natural and more than likely look fine but you can choose to lightly sand the affected area to remove most of the resin.

### GENERAL INFORMATION RELATING TO THE PRICE LIST

- Prices do not include VAT.
- VAT is not added to international orders.
- Prices do not include the cost of delivery.
- Prices do not include any appliances.
- Milestone Kitchens Raw Range has a rough texture, it is not meant to be perfectly finished, and super smooth. It is well sanded and sealed though so you need not be concerned about splinters.
- The inside of the drawers are made of MDF and not painted with sealer. The inside of the drawers are the only part of the Raw Range that is not solid wood.
- In order to lessen our environmental impact we do not like to wrap our units in heavy plastic, we use cardboard on the edges and one layer of cling wrap. Most delivery companies do use blankets during delivery. If you are organising your own delivery we suggest bringing blankets. Upon request we can give you a quotation to wrap your units in bubblewrap to protect them during transportation.
- The Milestone Kitchens' Raw Range is not painted.
- The Milestone Kitchens' Raw Range comes on legs.

### IMPORTANT INFORMATION REGARDING MEASUREMENTS

Note: Milestone Units are not designed to fit perfectly together in one continuous line. Our units are designed to be free standing. Gaps between your units ARE OKAY (and are much more hygienic). This gives you flexibility to arrange your units to the size of your kitchen space.

- All measurements are in mm.
- Units with tops have a 40mm top thickness.
- Units are measured at top height. The tops have a 25mm overlap on either side, a 45mm overlap in the front and a 15mm over hang at the back. i.e. If your unit is 1800mm wide, the top is 1800mm wide and the carcass itself is 1750mm wide.
- Make sure that the units you order can fit through your doors. The Corner Units and big Islands cannot fit through an ordinary size door.
- You must confirm your order IN WRITING via email. We will not be held responsible for delivering the wrong size unit unless it is different from the size on your carpenter order.
- You have the option of drawing up your own quote on our excel quote template. Ask us to send you our quoting document. We will go through this carefully and make sure everything is correct.

**WOOD IS UNPREDICATABLE, IT IS NOT ALWAYS PERFECTLY STRAIGHT AND SQUARE, IT IS ROUGH AND HAS KNOTS. WE STRONGLY BELIEVE IN OUR PRODUCTS AND HAVE PUT CAREFUL THOUGHT INTO EACH DESIGN, AND WE LOVE THEM! HOWEVER, WE ACCEPT THE POSSIBILITY THAT OUR PASSION MIGHT NOT BE SHARED BY EVERYONE. WE RESPECTFULLY ASK THAT YOU DO NOT ORDER A MILESTONE KITCHEN IF YOU DON'T SHARE OUR PHILOSOPHY.**



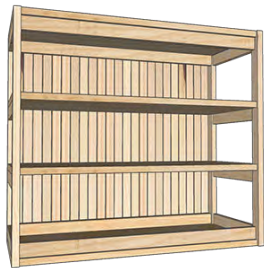
All units & sizes featured in the illustrations are available in the Raw Range.

## 7 Piece Starter Set Special (7PSSS) with Pine Tops R30 700 All prices exclude VAT

THE FOLLOWING SIZES OR SMALLER APPLY TO THE SPECIAL OFFER

### 1. WALL UNIT (with 2 shelves excl. bottom shelf)

900 mm x 300 mm x 900 mm  
Individual Price: R4 615



### 4. GROCERY SHELVES

600 mm x 500 mm x 2100 mm  
Individual Price: R5 854



### 6. SHELF

900 mm x 200 mm x 40 mm  
Individual Price: R1 903



### 2. SERVER (with 3 drawers and 2 shelves)

1800 mm x 600 mm x 900 mm  
Individual Price: R8 987

### 3. COFFEE DRESSER

900 mm x 600 mm x 2100 mm  
Individual Price: R6 537



### 5. SINK UNIT

(space for sink approx. 780 mm | sink not included)  
1800 mm x 600 mm x 900 mm  
Individual Price: R7 885



### 7. FLOOR UNIT (with 2 shelves)

900 mm x 600 mm x 900 mm  
Individual Price: R5 368

This set has been very carefully structured to give you, the client, the best possible deal as well as being economically feasible to the factory. Units cannot be changed or altered in anyway.

**Total Cost: R41 147**  
**You Save: R10 447**



## SINK UNITS

All Sink Units have a splash back of 100mm. Sink Units have 2 doors below the sink section. Please let us know whether you would like us to order and fit your sink for you. Fitting a drop in sink (cutting the hole for the sink) costs an additional R800. Note that undermount sinks cannot be fitted on wooden tops.

### SINK UNITS WITH 2 SHELVES

Please specify whether you would like the shelves to be on the LHS or RHS.



space for sink approx. 630 mm  
(more suitable for single sink)  
1200 mm x 600 mm x 900 mm  
Pine Top: R6 569



space for sink approx. 900 mm.  
1600 mm x 600 mm x 900 mm  
Pine Top: R7 333



space for sink approx. 780 mm.  
1800 mm x 600 mm x 900 mm  
Pine Top: R7 885



Left-hand side      Right-hand side  
The width of the shelves  
will be wider depending on the unit size.

### SINK UNITS WITH 4 SHELVES



space for sink approx. 930 mm.  
2100 mm x 600 mm x 900 mm  
Pine Top: R8 522



space for sink approx. 710 mm.  
2400 mm x 600 mm x 900 mm  
Pine Top: R9 313



space for sink approx. 810 mm.  
2700 mm x 600 mm x 900 mm  
Pine Top: R9 982



Left-hand & Right-hand side  
The width of the shelves  
will be wider depending on the unit size.



## FLOOR UNITS

All Floor Units have a splash back of 100mm.

### FLOOR UNITS WITH 1 SLATTED BOTTOM SHELF AND 1 SOLID MIDDLE SHELF



600 mm x 600 mm x 900 mm  
Pine Top: R4 798



900 mm x 600 mm x 900 mm  
Pine Top: R5 368



1200 mm x 600 mm x 900 mm  
Pine Top: R5 938



1600 mm x 600 mm x 900 mm  
Pine Top: R6 698



1800 mm x 600 mm x 900 mm  
Pine Top: R7 390



2100 mm x 600 mm x 900 mm  
Pine Top: R8 107



2400 mm x 600 mm x 900 mm  
Pine Top: R8 909

### FLOOR UNIT SIDE VIEWS



2700 mm x 600 mm x 900 mm  
Pine Top: R9 479



600mm wide - 1200mm wide



1600mm wide - 1800mm wide



2400mm wide - 2700mm wide



## SERVERS

All Servers have a splash back of 100mm.

### SERVERS WITH 2 SHELVES AND 1 DRAWER



600 mm x 600 mm x 900 mm  
Pine Top: R5 342



900 mm x 600 mm x 900 mm  
Pine Top: R6 040



1200 mm x 600 mm x 900 mm  
Pine Top: R7 082



1600 mm x 600 mm x 900 mm  
Pine Top: R8 013

### SERVERS WITH 2 SHELVES AND 3 DRAWERS



1800 mm x 600 mm x 900 mm  
Pine Top: R8 987



2100 mm x 600 mm x 900 mm  
Pine Top: R9 923



2400 mm x 600 mm x 900 mm  
Pine Top: R10 854

### SERVER WITH 2 SHELVES AND 6 DRAWERS



2700 mm x 600 mm x 900 mm  
Pine Top: R11 552

### SERVERS WITH 2 SHELVES SIDE VIEWS



600mm wide - 900mm wide



1200mm wide - 1800mm wide



2100mm wide - 2400mm wide



2700mm wide



### SERVERS WITH 1 SHELF AND 1 DRAWER



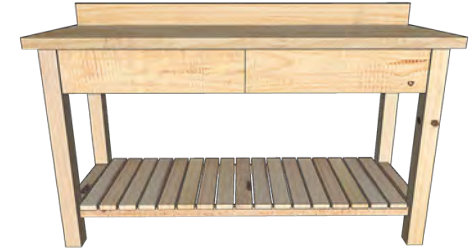
600 mm x 600 mm x 900 mm  
Pine Top: R5 184



900 mm x 600 mm x 900 mm  
Pine Top: R5 809



1200 mm x 600 mm x 900 mm  
Pine Top: R6 778



1600 mm x 600 mm x 900 mm  
Pine Top: R7 612

### SERVERS WITH 1 SHELF AND 2 DRAWERS

### SERVERS WITH 1 SHELF AND 3 DRAWERS



1800 mm x 600 mm x 900 mm  
Pine Top: R8 537



2100 mm x 600 mm x 900 mm  
Pine Top: R9 401



2400 mm x 600 mm x 900 mm  
Pine Top: R10 258

### SERVER WITH 1 SHELF AND 6 DRAWERS



2700 mm x 600 mm x 900 mm  
Pine Top: R10 884

### SERVERS WITH 1 SHELF SIDE VIEWS



600mm wide - 900mm wide



1200mm wide - 1800mm wide



2100mm wide - 2400mm wide



2700mm wide



## TALL SHELVING UNITS

All Tall Shelving Units have 5 shelves including top and bottom shelf.



600 mm x 500 mm x 2100 mm  
Pine Top: R5 854

900 mm x 500 mm x 2100 mm  
Pine Top: R6 417

## WARDROBE

With 5 shelves including top and bottom shelf and hanging space.



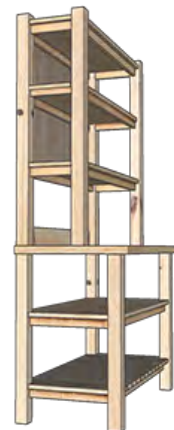
1350 mm x 600 mm x 2100 mm  
Pine Top: R7 135

## COFFEE DRESSERS

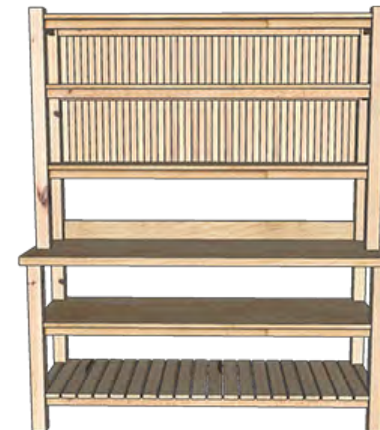
COFFEE DRESSERS WITH 2 SHELVES BELOW THE WORK TOP AND 2 SHELVES FOR MUGS.



900 mm x 600 mm x 2100 mm  
Pine Top: R6 537



1200 mm x 600 mm x 2100 mm  
Pine Top: R7 196



1800 mm x 600 mm x 2100 mm  
Pine Top: R8 690



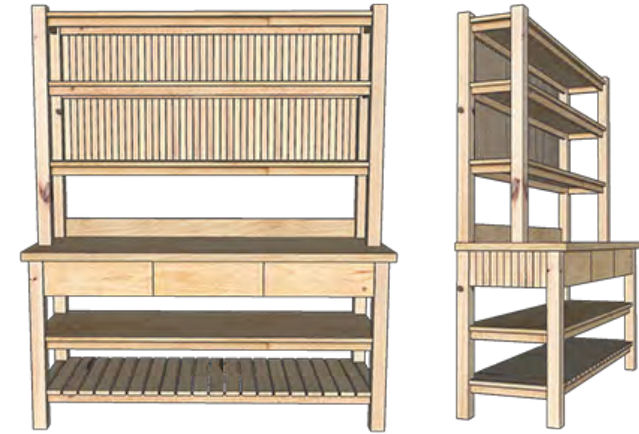
### COFFEE DRESSERS WITH DRAWERS, 2 SHELVES BELOW THE TOP AND 2 SHELVES FOR MUGS.



Coffee Dresser with 1 drawer  
900 mm x 600 mm x 2100 mm  
Pine Top: R7 232



Coffee Dresser with 2 drawers  
1200 mm x 600 mm x 2100 mm  
Pine Top: R8 373



Coffee Dresser with 3 drawers  
1800 mm x 600 mm x 2100 mm  
Pine Top: R10 466

## ISLANDS

### MINI TABLE ISLAND

With 1 shelf and an overhang on both sides for 2 stools.



Top View



Front and Back View



Side View

1200 mm x 600 mm x 900 mm  
Pine Top: R5 530





### DIVIDED ISLAND

With sitting space for 2 stools on one side and 2 shelves on the other.



Top View



Front View



Back View



Left View



Right View

1250 mm x 800 mm x 900 mm  
Pine Top: R7 199

### CLASSIC ISLAND

With 1 shelf and 1 solid middle shelf. Comes on 80mm castor wheels.



Top View



Front and Back View



Side View

1800 mm x 800 mm x 900 mm  
Pine Top: R7 668



## WALL UNITS

### WALL UNITS WITH 2 SHELVES excluding bottom shelves



600 mm x 300 mm x 900 mm  
Pine Top: R4 190



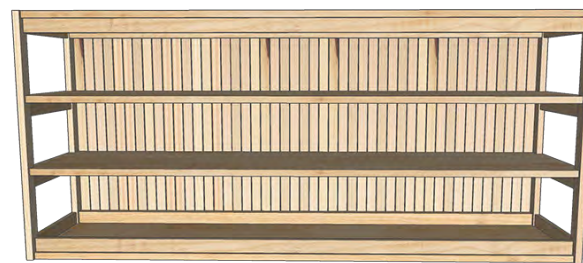
900 mm x 300 mm x 900 mm  
Pine Top: R4 615



1200 mm x 300 mm x 900 mm  
Pine Top: R5 039



1600 mm x 300 mm x 900 mm  
Pine Top: R5 605



1800 mm x 300 mm x 900 mm  
Pine Top: R5 888



Side View  
600mm wide - 1800mm wide



**SHELF**



900 mm x 200 mm x 40 mm  
Pine Top: R1 903

### WALL UNIT WITH 3 SHELVES excluding bottom shelves

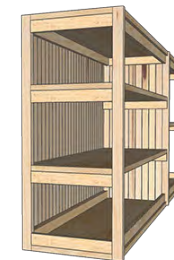


2100 mm x 300 mm x 900 mm  
Pine Top: R6 312

### WALL UNIT WITH 5 SHELVES excluding bottom shelves



2400 mm x 300 mm x 900 mm  
Pine Top: R6 737



Side View  
2100mm wide



Side View  
2400mm wide



## OTHER

### OVEN HOUSE

With space for oven and microwave.



720 mm x 600 mm x 2100 mm  
Pine Top: R6 206

### CORNER UNIT

With 2 shelves and 100mm splashback.



Front View



Left View



Right View

900 mm / 900mm x 600 mm x 900 mm  
Pine Top: R7 136

### TABLES



900 mm x 900 mm x 740 mm  
Pine Top: R5 093



2100 mm x 900 mm x 740 mm  
Pine Top: R6 932

### BENCHES



2100 mm x 340 mm x 450 mm  
Pine Top: R6 085